

# Current Retrograde Approach

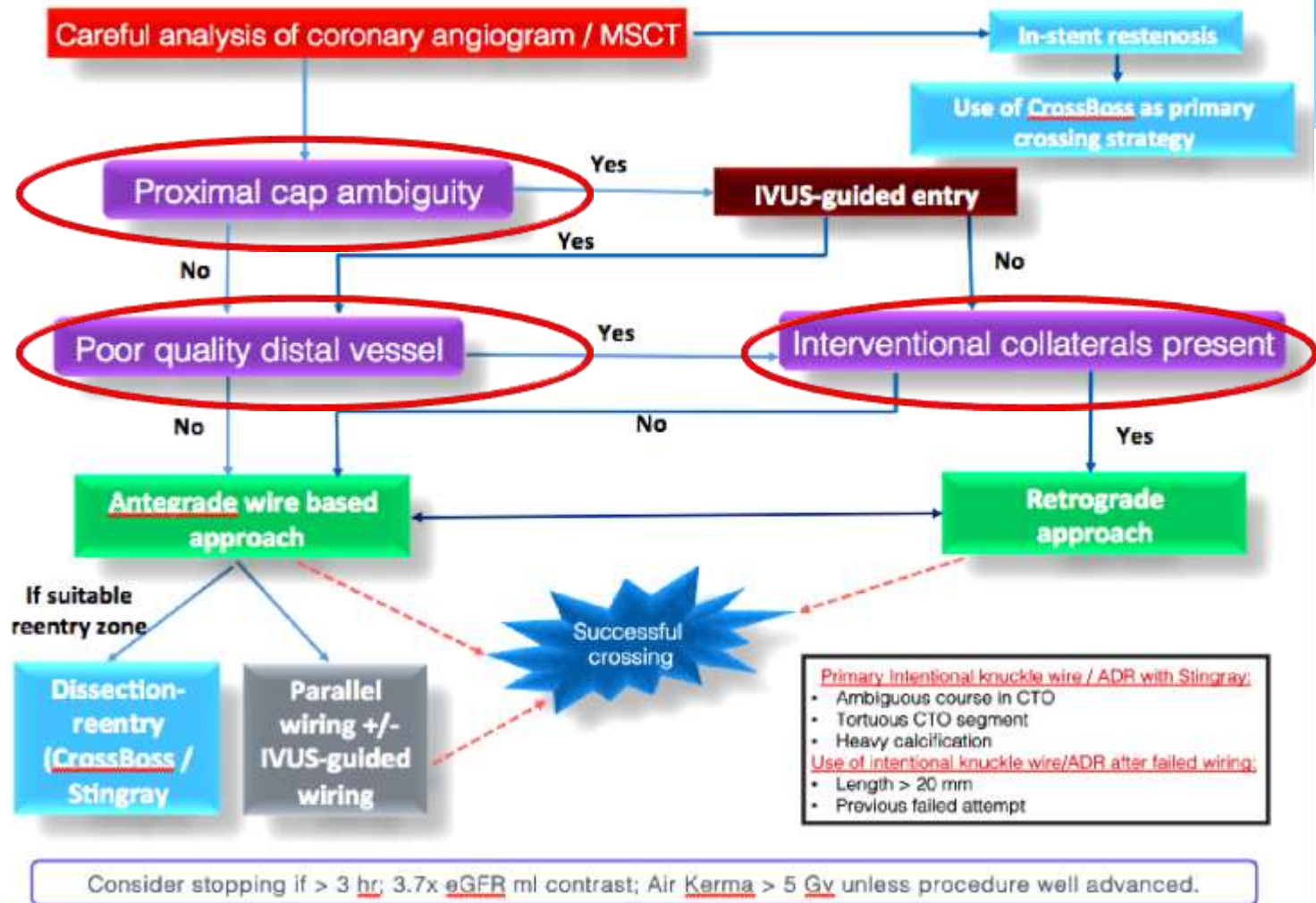
-- Based on APCTO Algorithm --

Paul Hsien-Li Kao, MD

Professor of Medicine

National Taiwan University Hospital

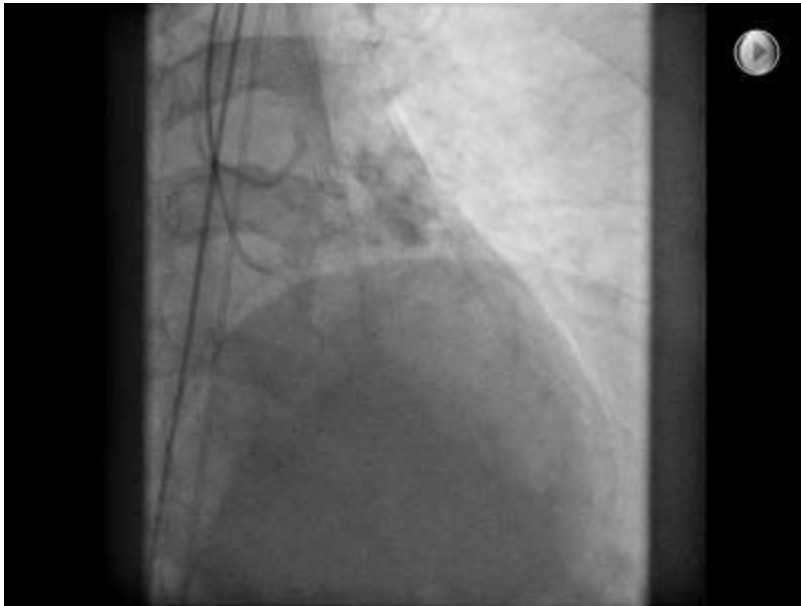
# When to start retro?



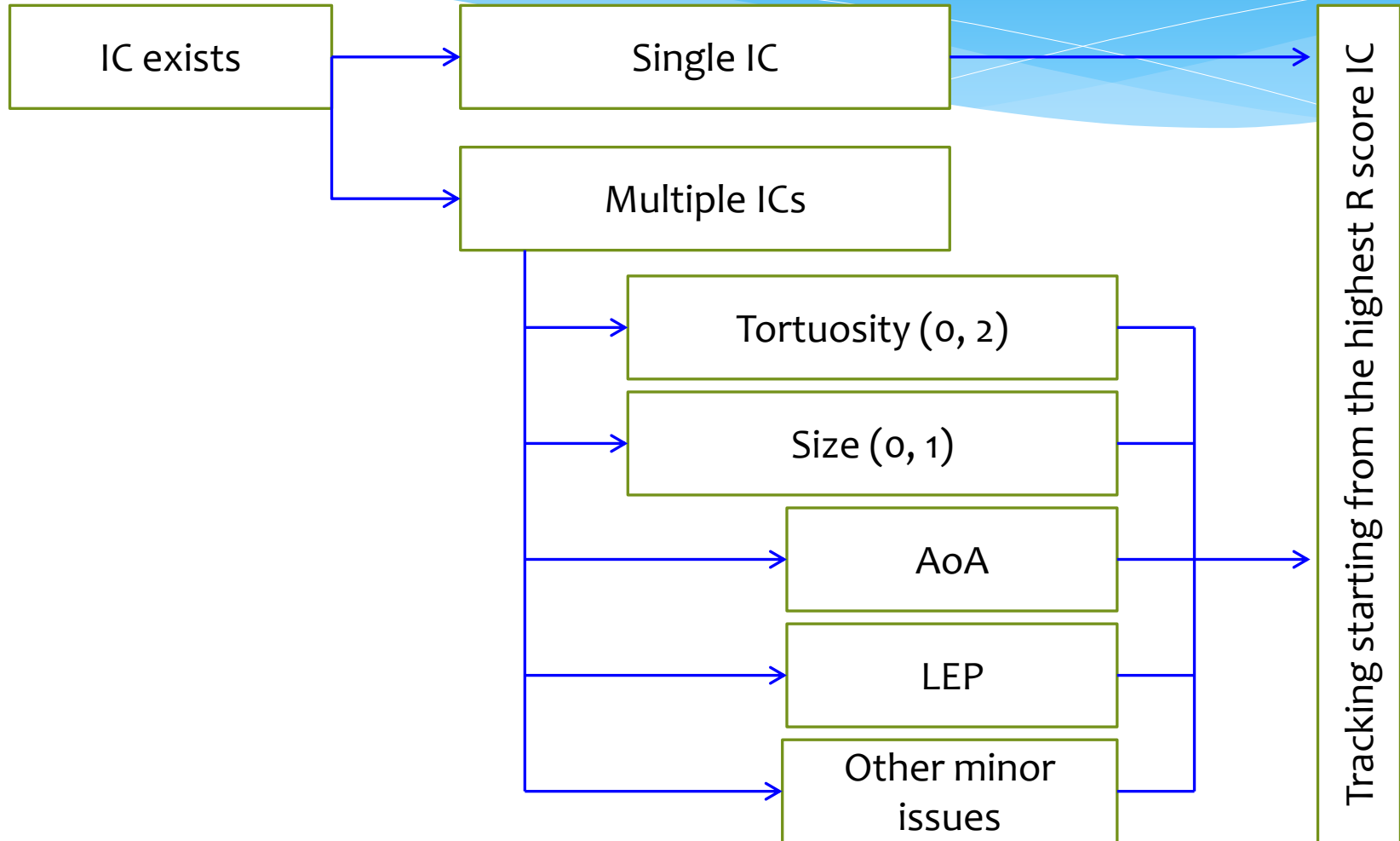
# Interventional channel (IC)

- \* Depends on operator experience and device availability
- \* Low-mag bilateral injection with delayed exposure
- \* Careful tip injection
- \* Once IC tracking successful, final success is >95%
- \* Complication occurs most frequently during IC tracking

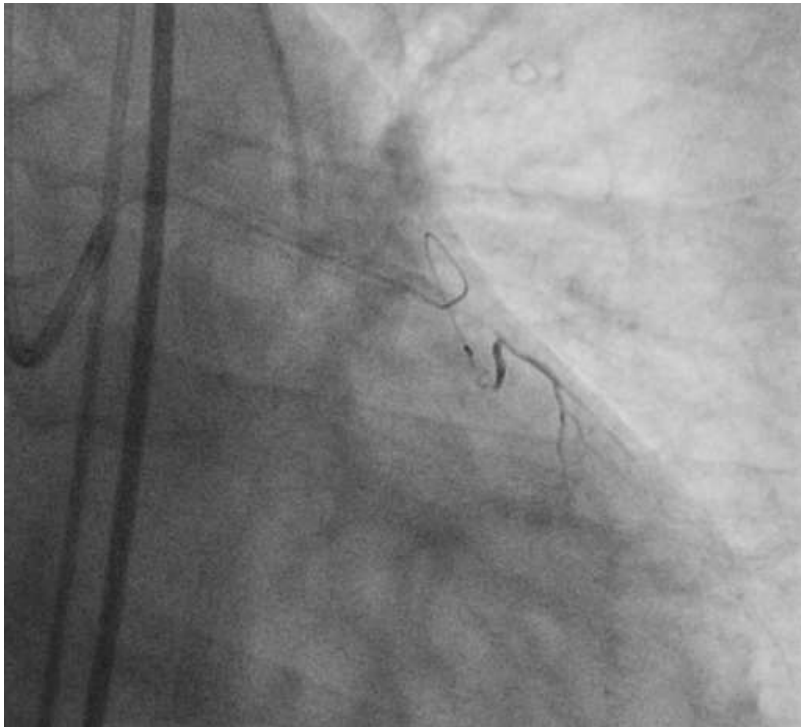
# Good diagnostic imaging



# IC selection

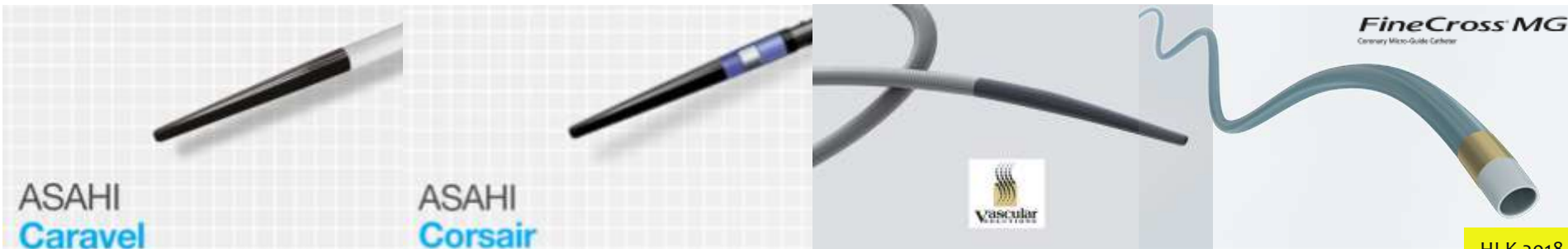


# IC tracking

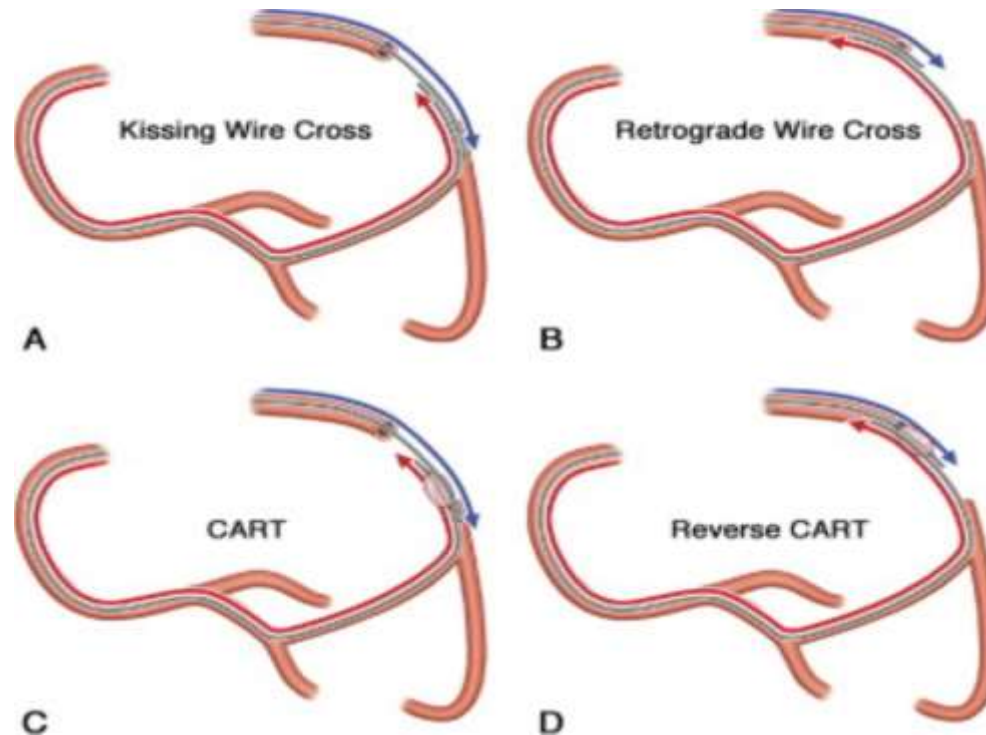


# Device for IC tracking

- \* Wire choice and shaping is very important
  - \* Tip load/torque transmission/lubricity
  - \* c/w “Intentional” tip fracture
- \* Micro-catheter
  - \* Tip flexibility/entry profile
  - \* Shaft thickness/pushability

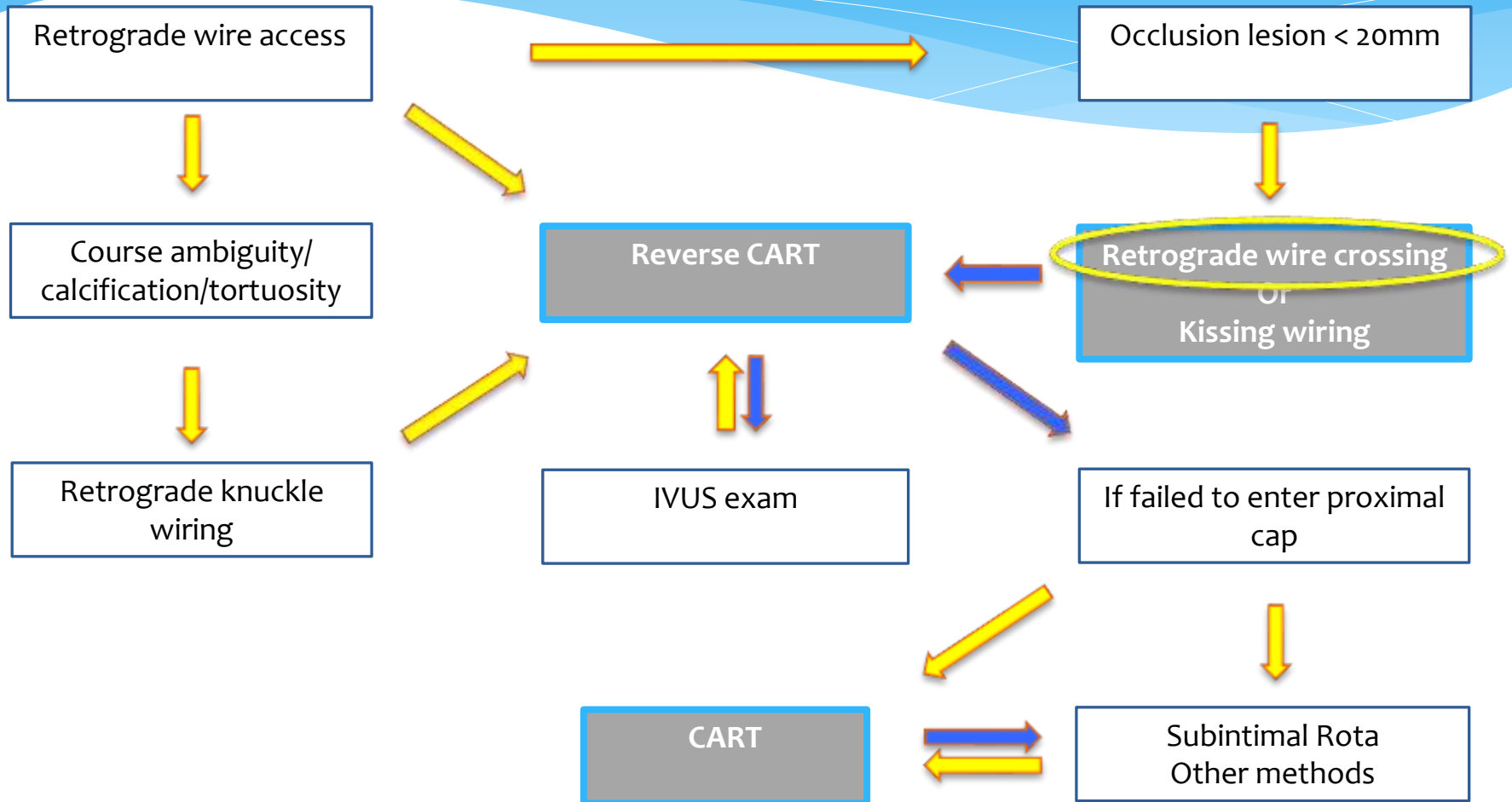


# Crossing mode of CTO segment

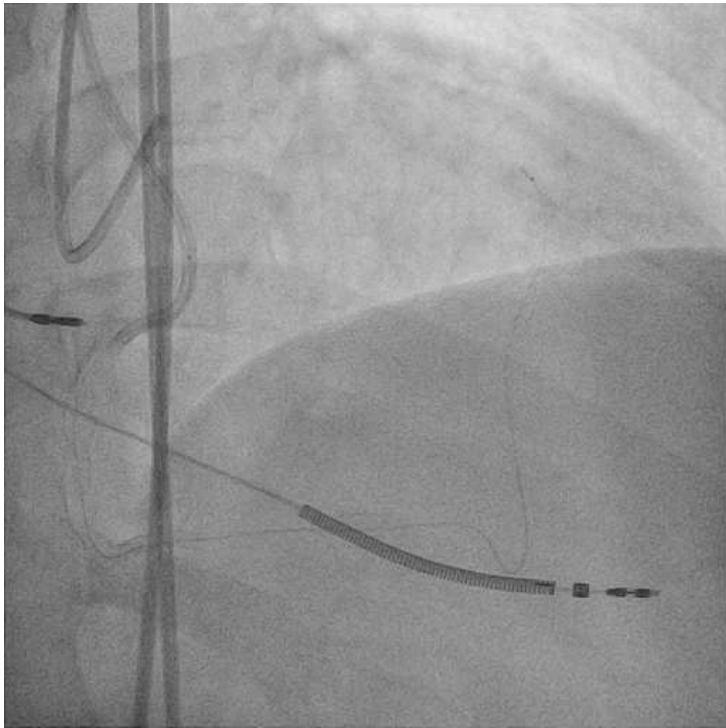




# APCTO retro sub-algorithm



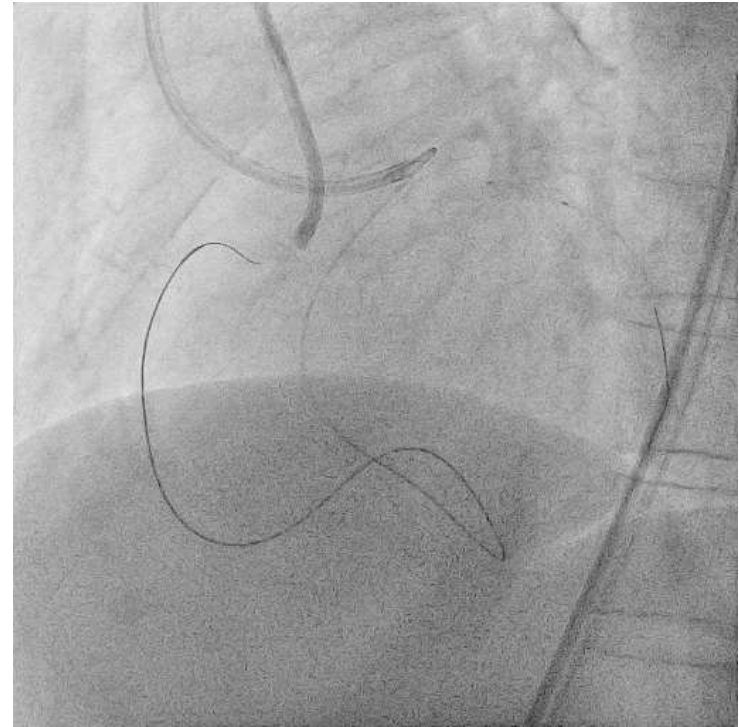
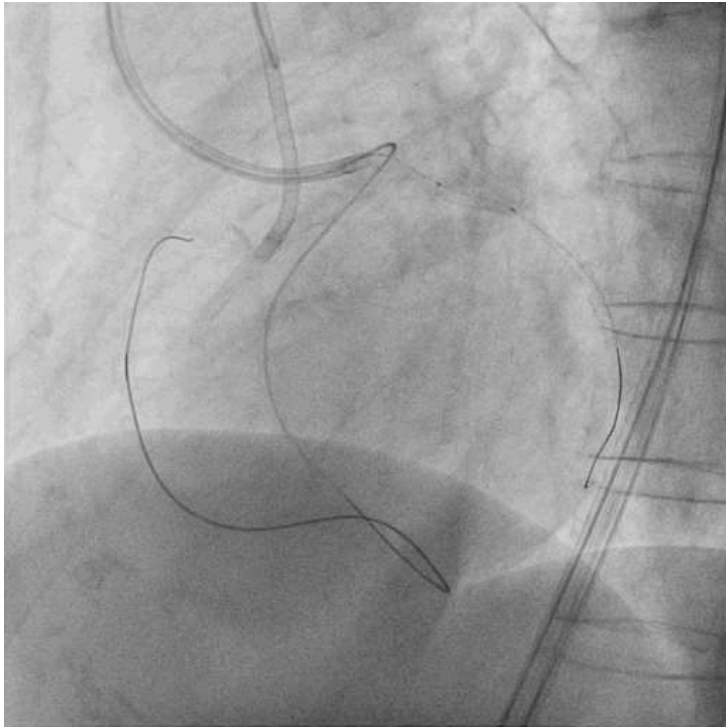
# Bilateral injection



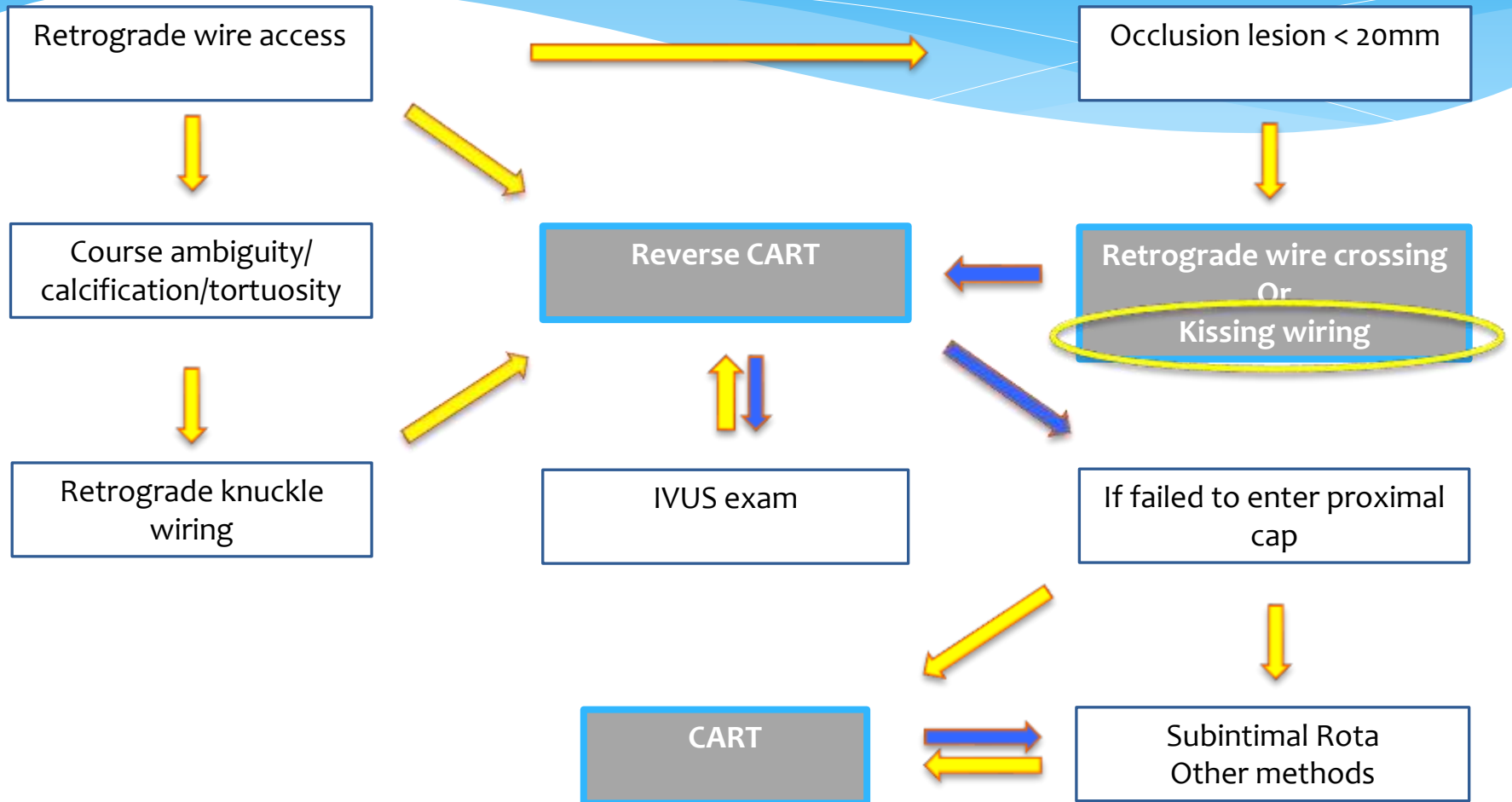
# Retrograde wire crossing



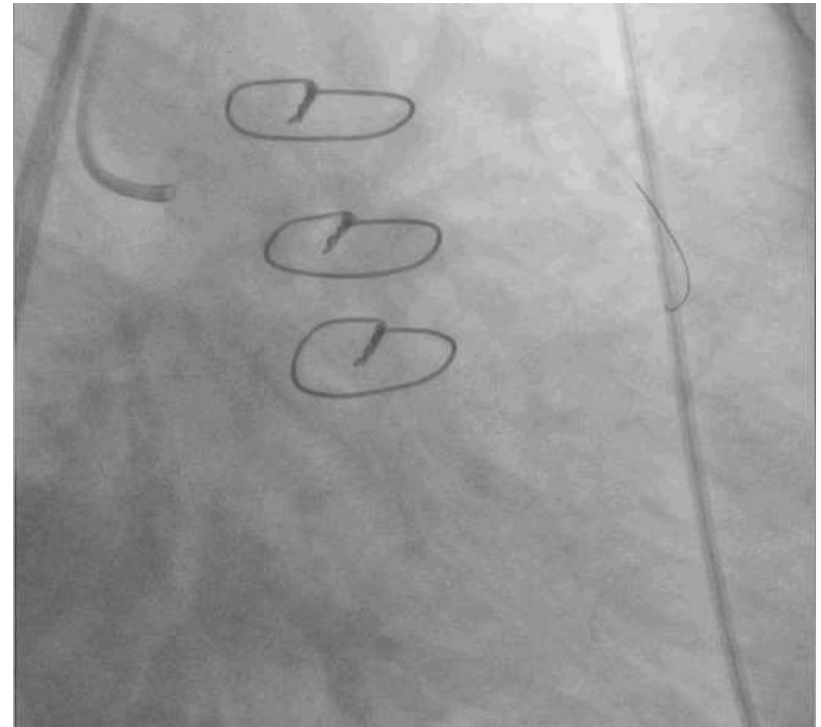
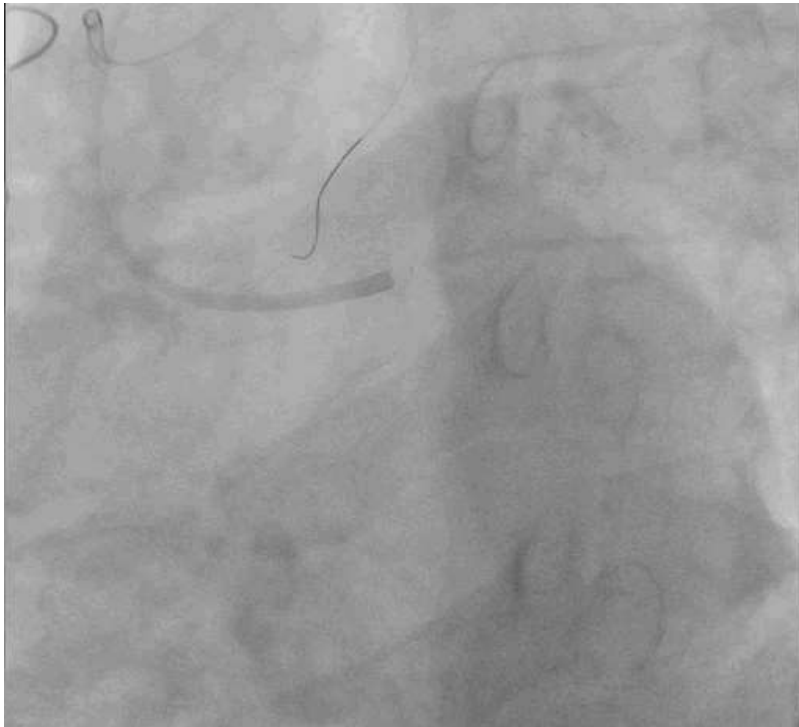
# Another RWC case



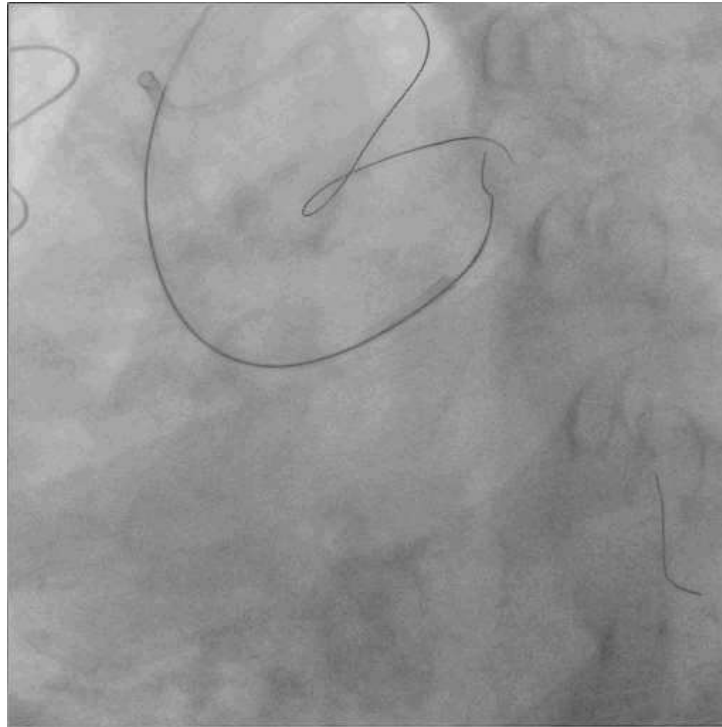
# APCTO retro sub-algorithm



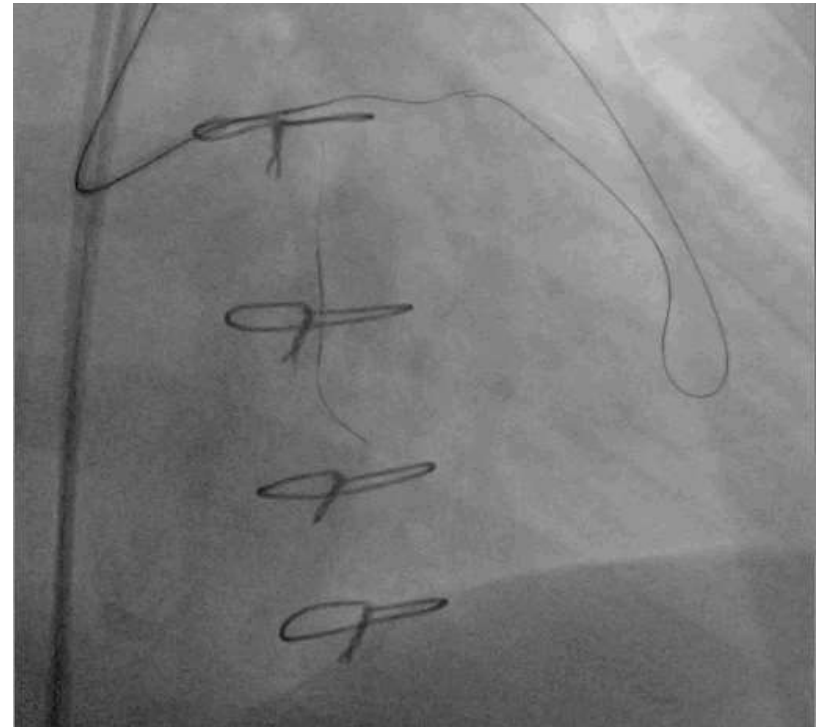
# Bilateral injection



# RWC wire was stuck

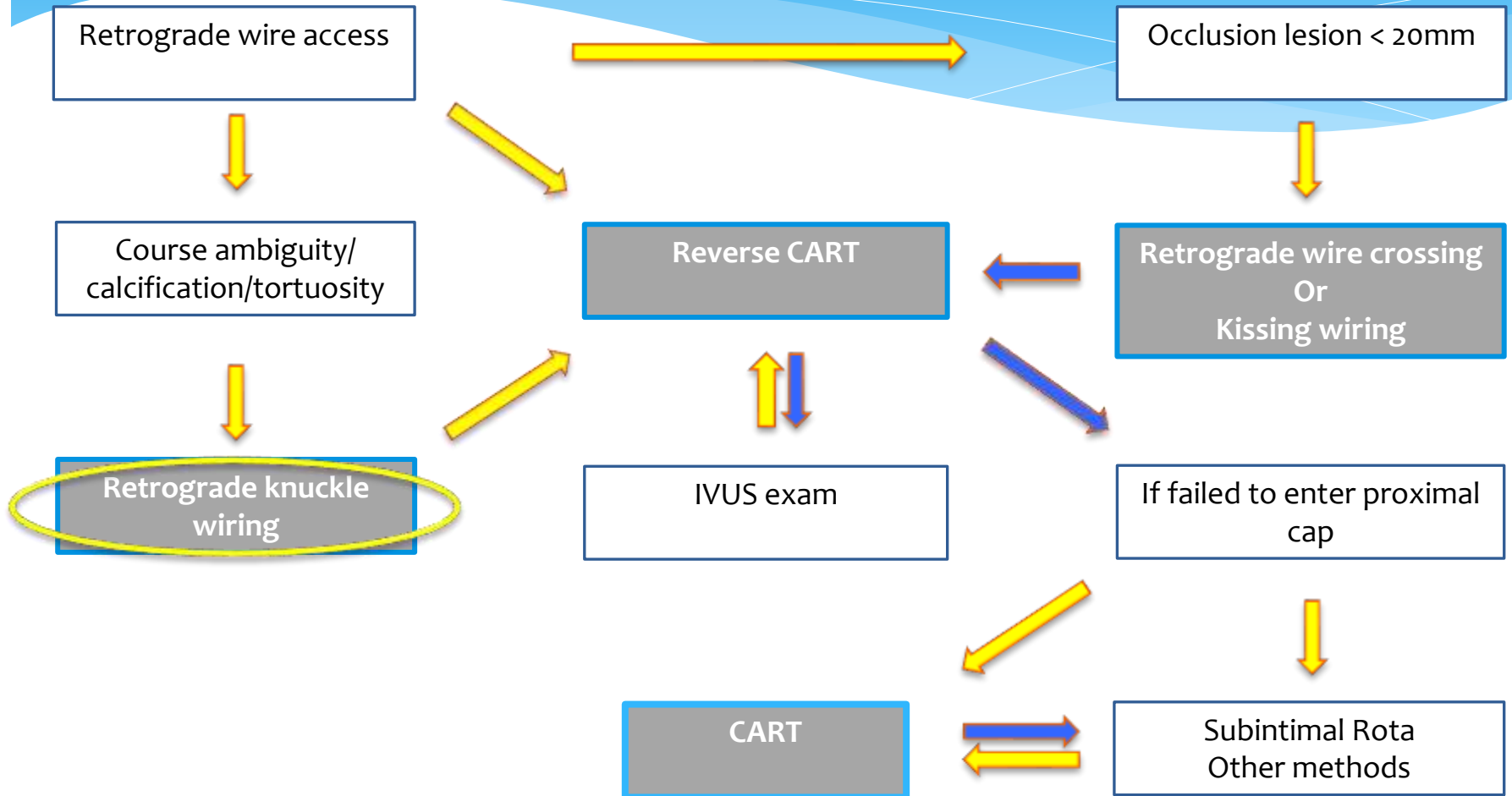


# Antegrade kissing wiring

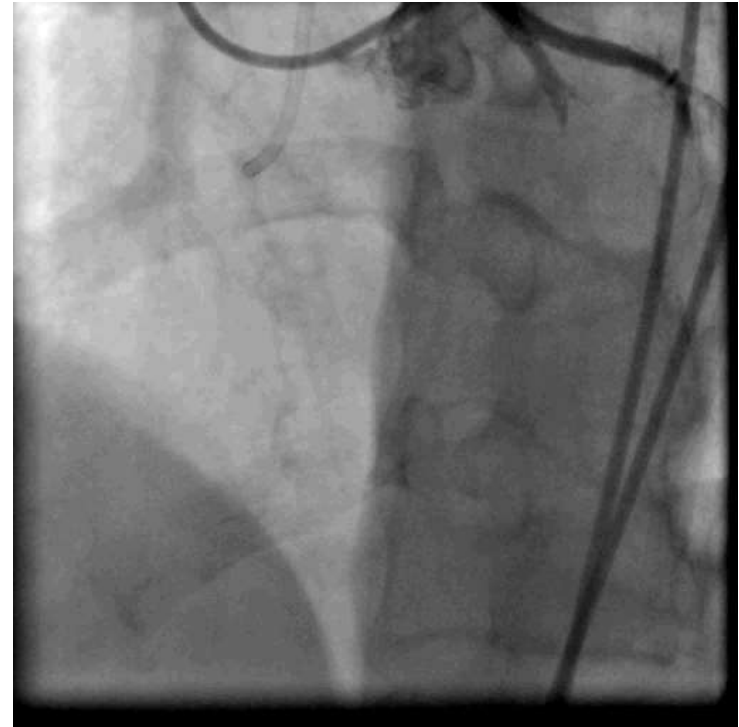
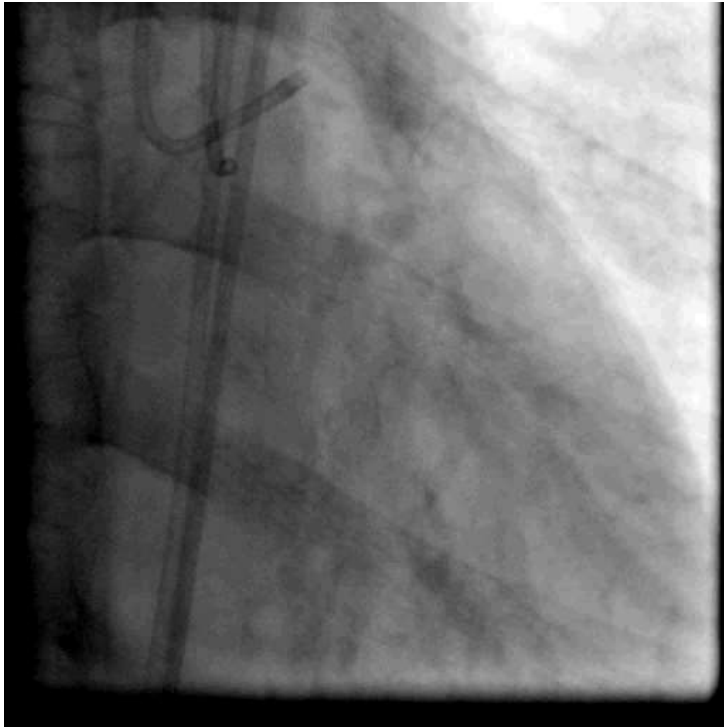




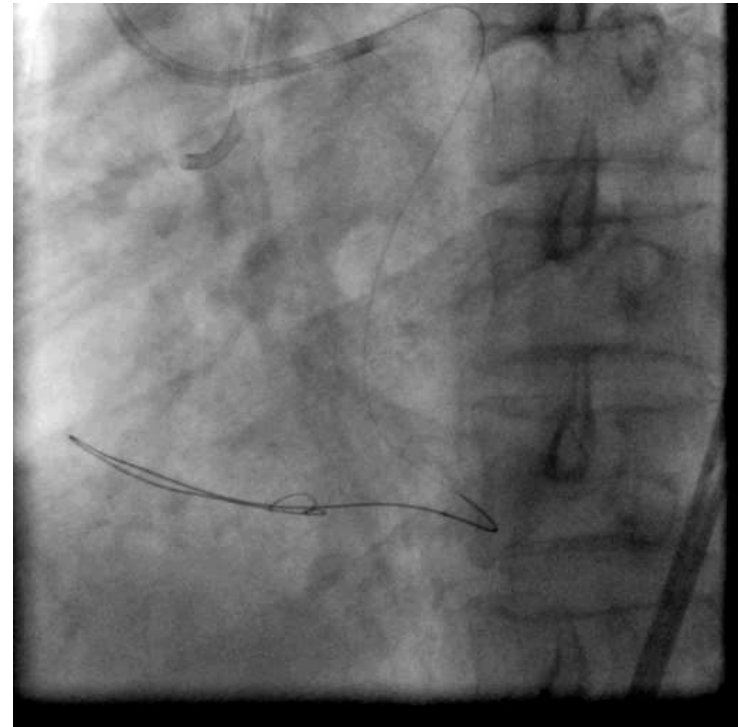
# APCTO retro sub-algorithm



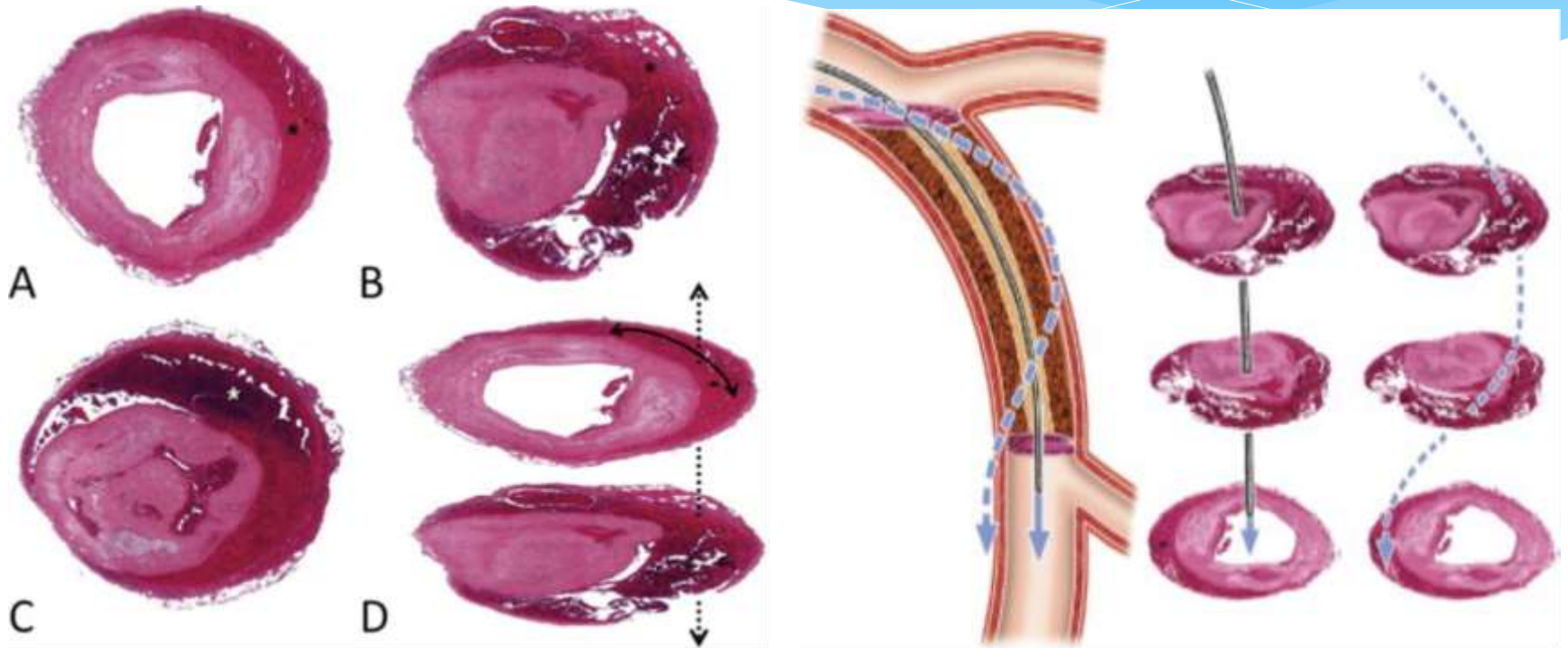
# Bilateral injection



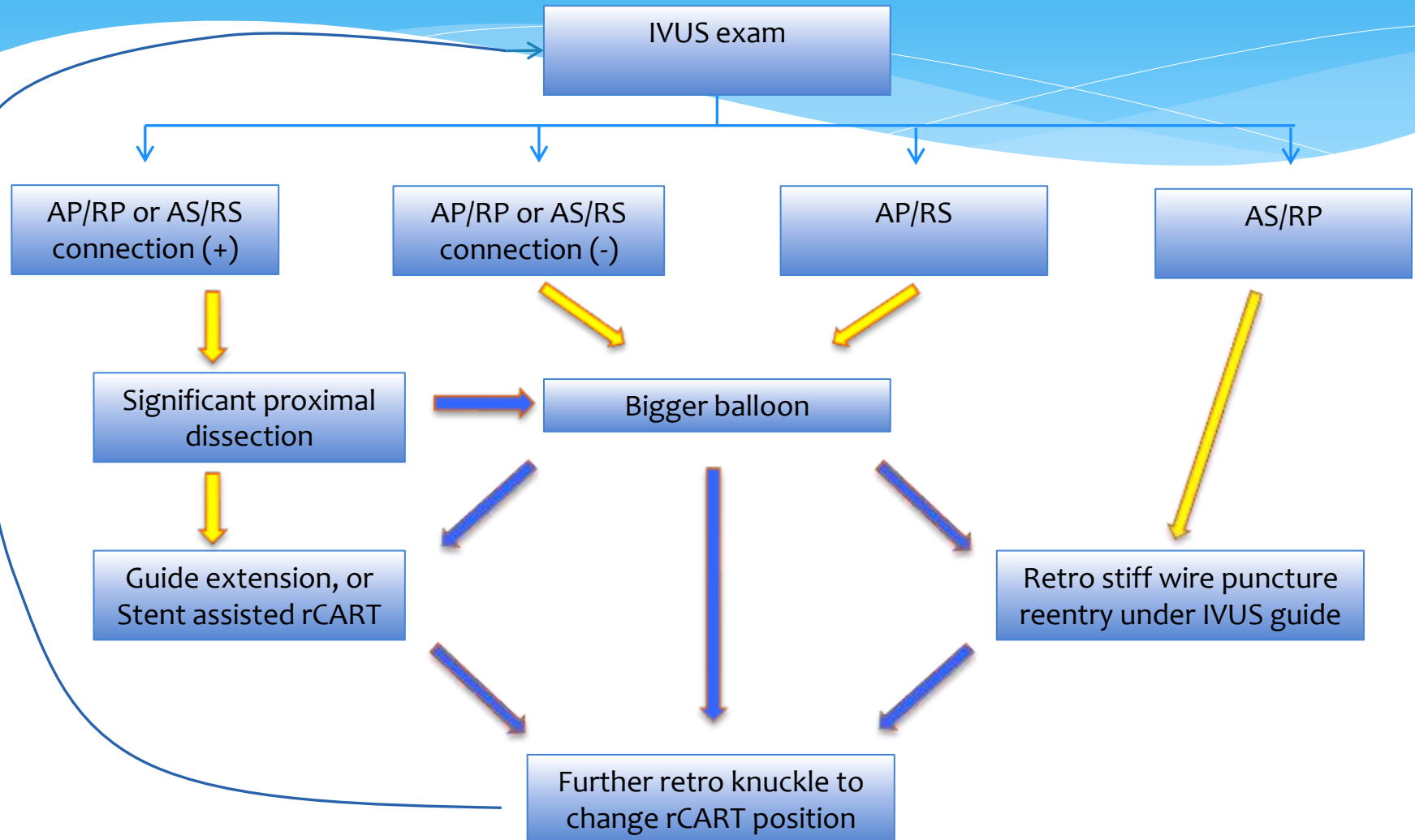
# Retro knuckling



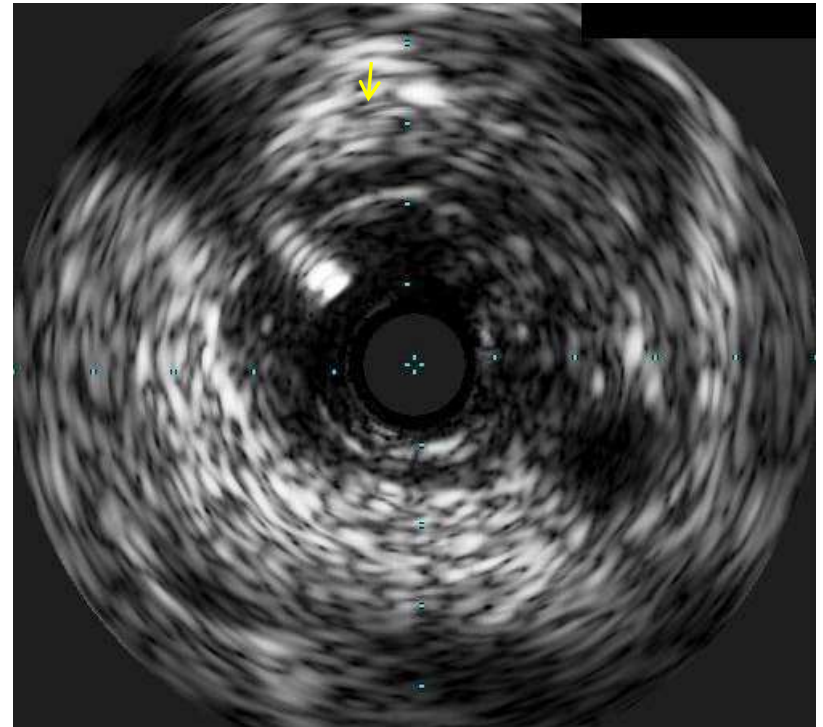
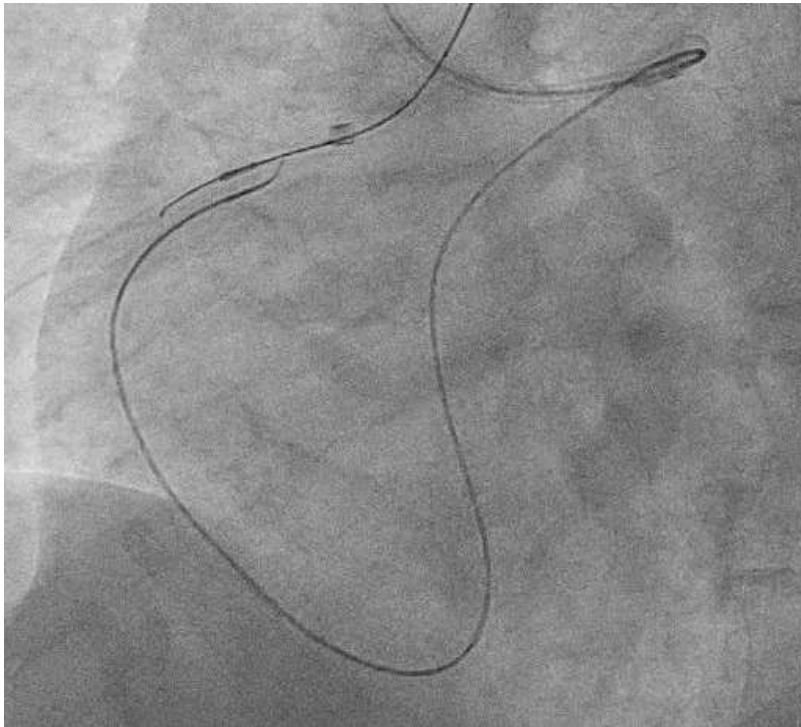
# Wire positions in reverse CART



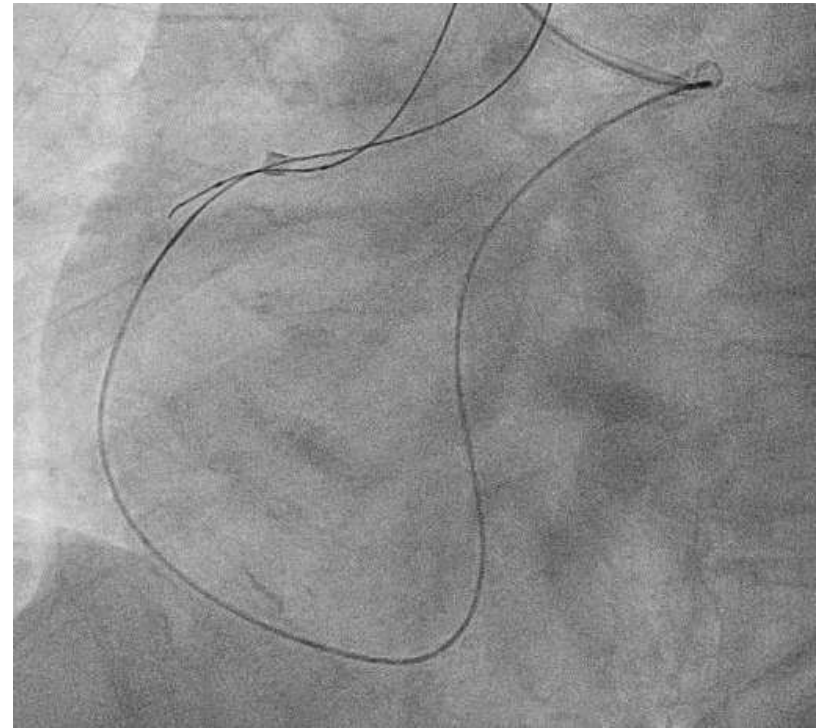
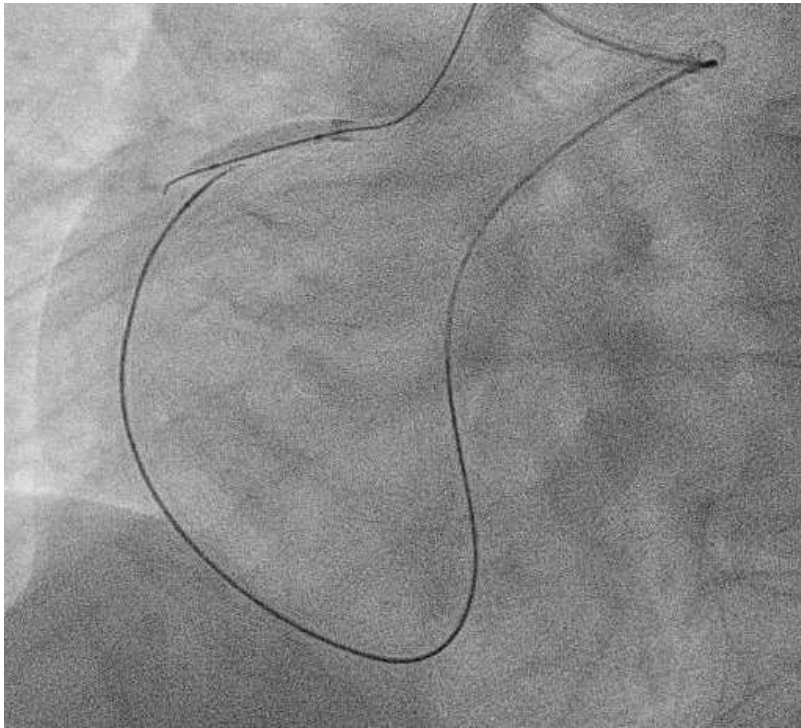
# APCTO Algorithm when rCART failed



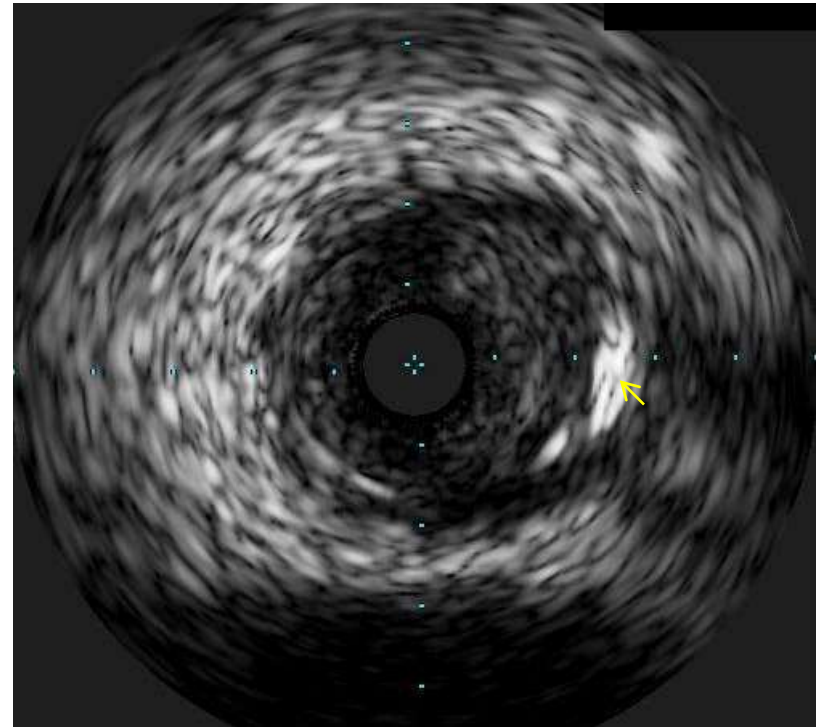
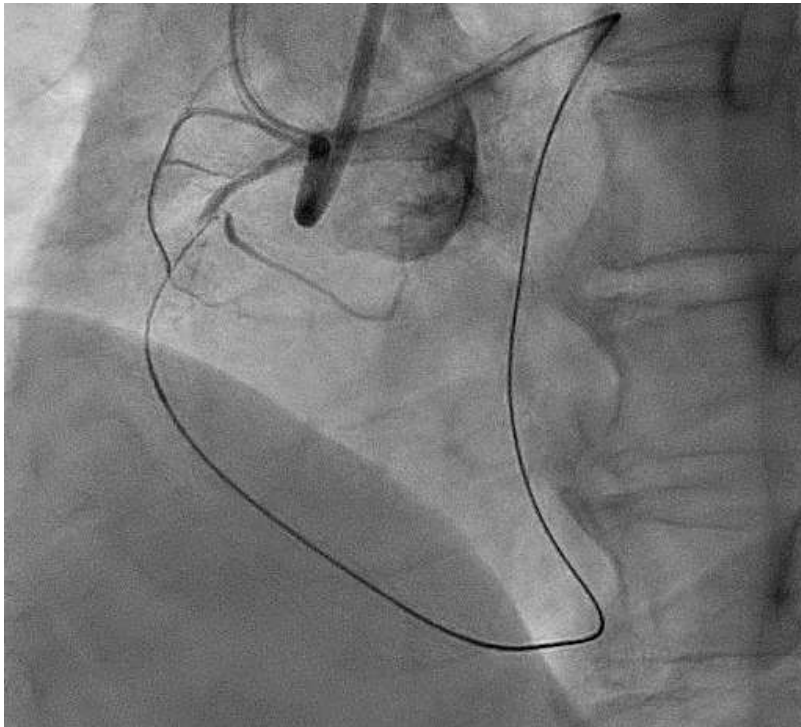
# AP/RP



# Success after larger balloon rCART

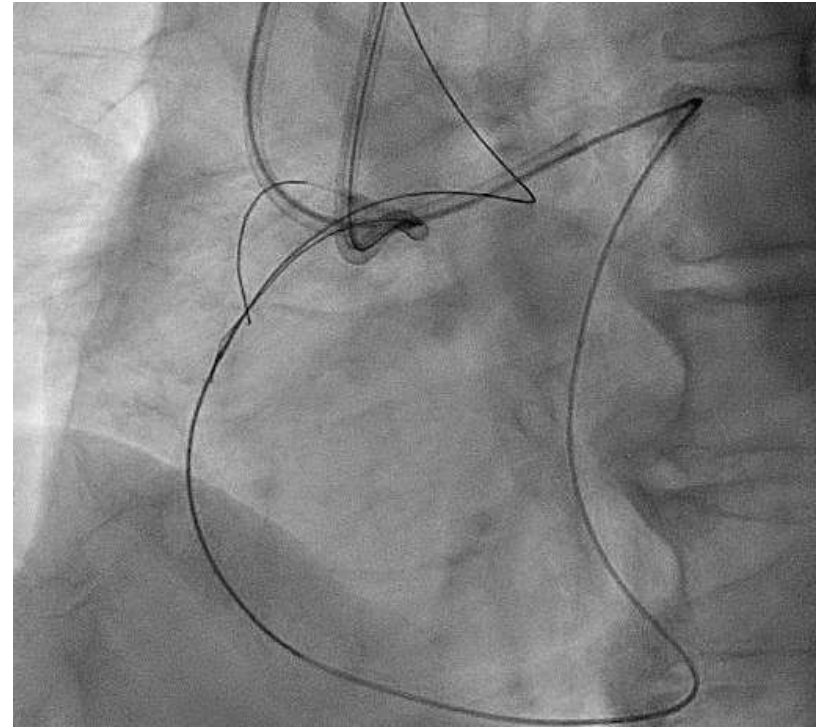
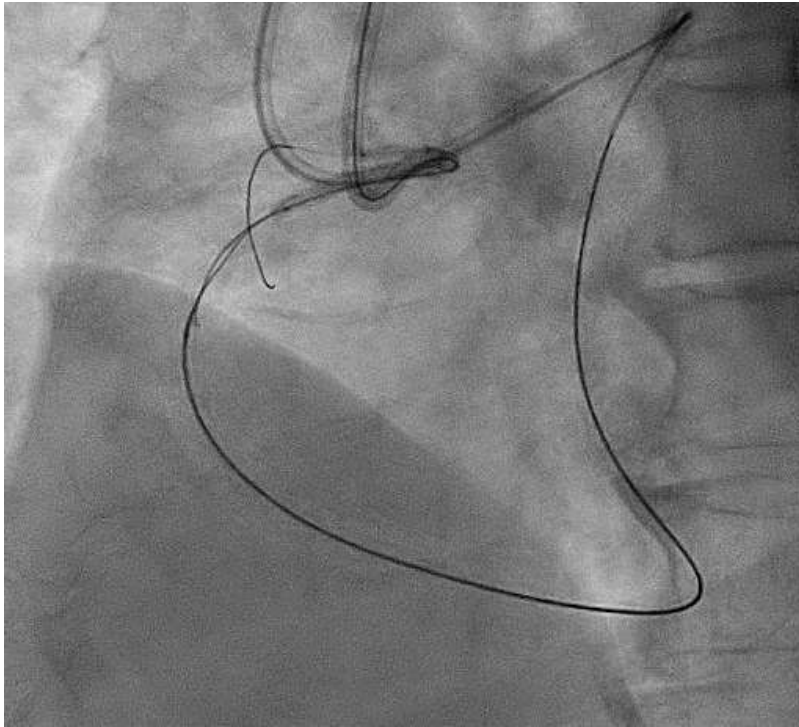


# AP/RS

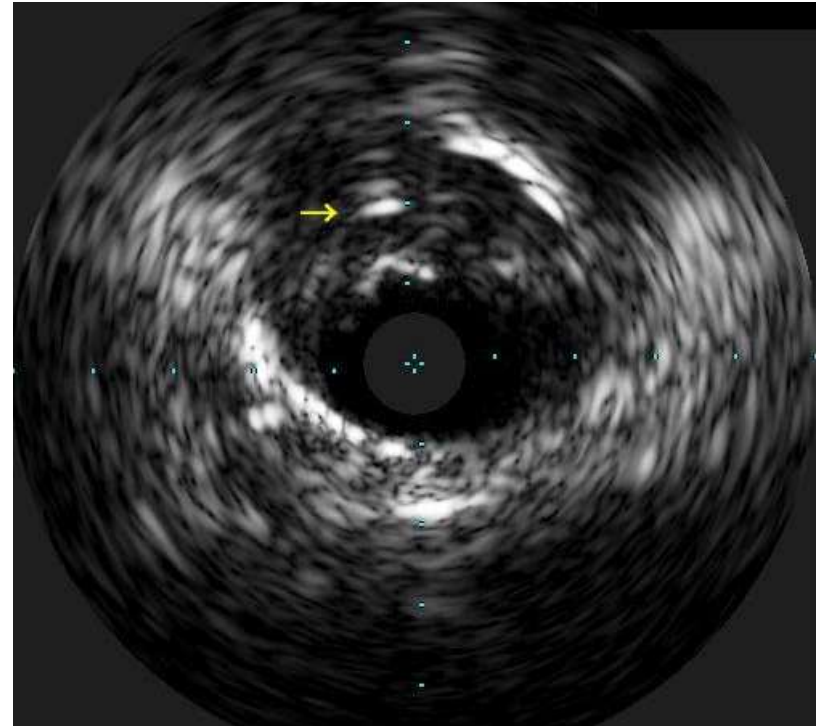
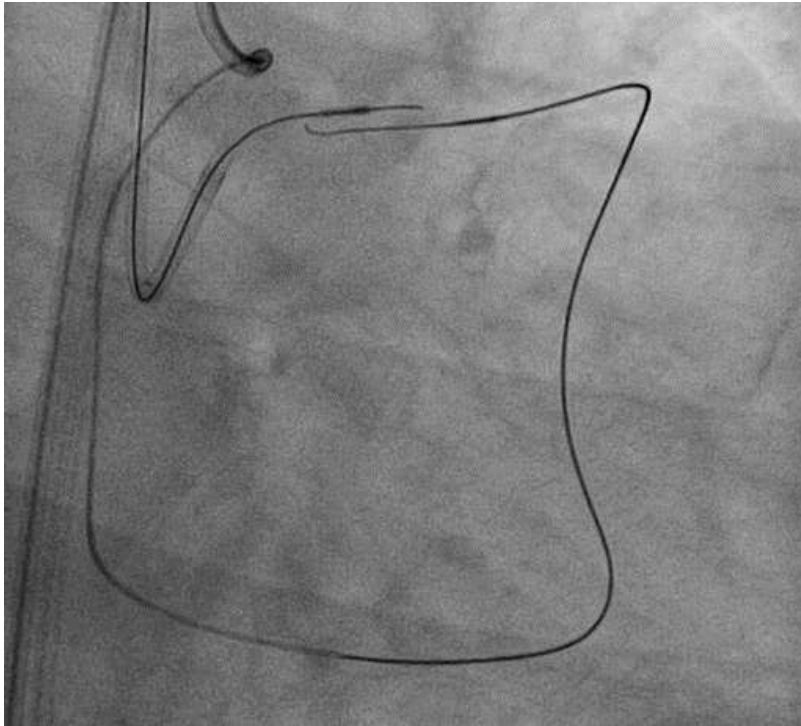




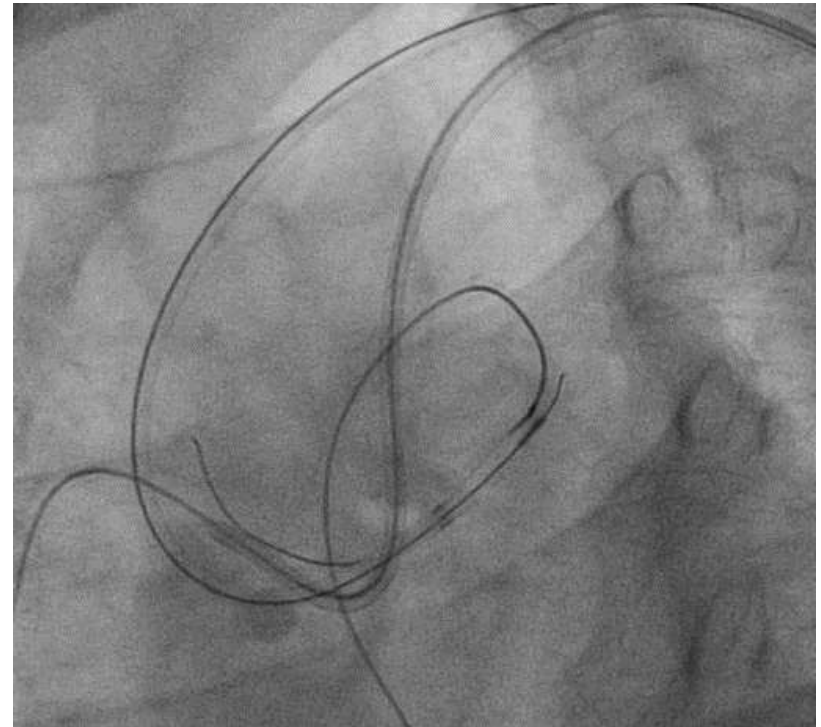
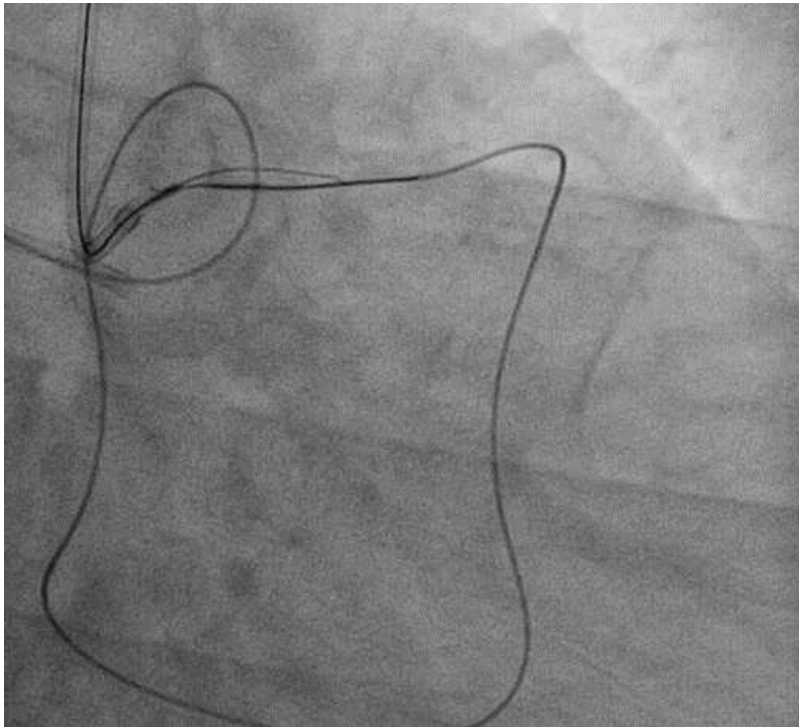
# Success after rCART



# AS/RP



# Retro puncture under IVUS



# APCTO retrograde algorithm

- \* Encourages a structure when proximal target is poor, and distal target is good
- \* Known for long and narrow CTO
- \* Encourages dilation, especially in failed rCART
- \* Effort made to minimize subintimal tract length across of distal side branches

Thank You For Your Attention